

Moldex3D eXplorer 2011 for Creo Parametric

- Design in 3D, Analyze in 3D

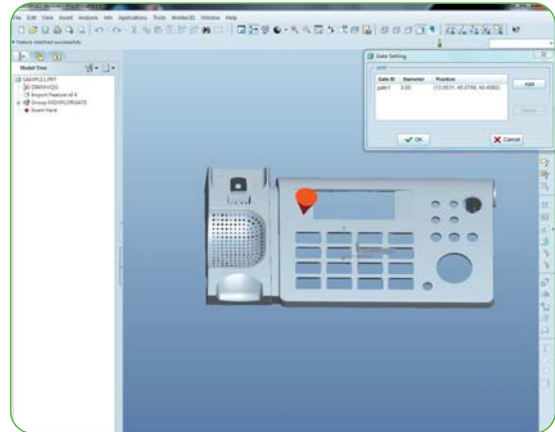
Make Designs Perfect

Moldex3D eXplorer 2011 for Creo Parametric is an intuitive interface fully embedded with Creo Parametric, providing a quick access to Moldex3D flow simulation. The seamless integration leads a way to optimizations for not only part designs, but also manufacturing process parameters.

Benefits

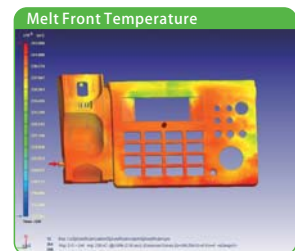
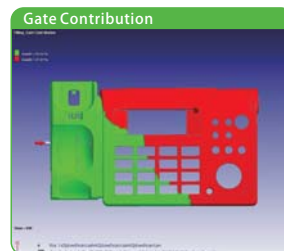
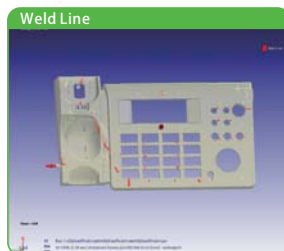
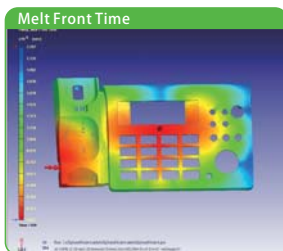
Upfront CAE for part designers to

- Avoid short shot
- Manipulate weld line and air trap
- Check gate contribution for flow balance
- Reduce pressure drop
- Optimize wall thickness for profitability



Features

- Fully embedded in Creo Parametric CAD software, no additional training is needed.
- Automatic 3D mesh generation, no user intervention and CAD conversion are needed.
- Comprehensive plastic material database (>5,000 grades) and friendly interface for setting molding parameters.
- Pioneering 3D technology for more accurate results rendering, smart animations and automatic HTML report generation.
- High performance 3D filling simulation supported by parallel computing up to 4 cores to do a quick part verification.



System Requirements

- | | | |
|---------------|-----------------|---|
| ■ Platform | Windows | Windows 7 32/64 bit, Windows Vista 32/64 bit |
| ■ Software | Creo Parametric | Pro/Engineer Wildfire 4.0 datecode M150 or higher |
| ■ Recommended | | Creo Elements/Pro 5.0 datecode M040 or higher |
| | | Creo Parametric 1.0 |
| ■ Hardware | CPU | Intel P4 2.8 GHz or higher |
| | RAM | 2.0 GB or higher |
| | Hard disk | 60 GB or higher |

Moldex3D

Headquarters
8F-2, No.32, Taiyuan St. Chupei City, Hsinchu County 302, Taiwan
TEL:+886-3-560-0199

America Office
21800 Haggerty Road Suite 109 Northville MI 48167
TEL:+1-248-946-4570

mail@moldex3d.com
www.moldex3d.com